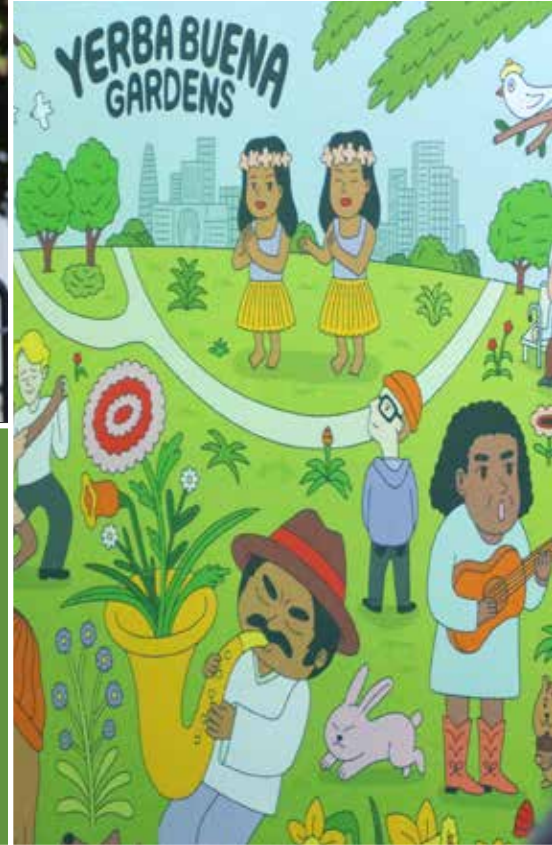


Learn. Play. Connect.

Annual Report 2025





Mission

To provide arts, culture, recreation, and nature in beautiful, accessible, welcoming spaces for everyone.



Vision

A joyful and thriving place that inspires culture, connection, healing, and a feeling of community for all.





Values

EQUITY | INCLUSION | INTEGRITY | SERVICE | SUSTAINABILITY



A LETTER FROM OUR EXECUTIVE DIRECTOR

The Yerba Buena Gardens continues to be a place of gathering and the one oasis in downtown San Francisco that is thriving in the tough economic times.

A lot has transpired in the fiscal year from July 2024 through June 2025 that has brought attention to the Gardens in numbers and the media coverage. The main attraction was the display from Oaxaca, Mexico of the eight Alebrijes and Nahuales from April 22 through June 22, 2025. These larger than life, literally, sculptures brought over 2m dedicated visitors to see the twenty-foot-tall creations, both during the day and when they were lit up at night. We will continue the tradition for an annual art display each of the coming years to keep the momentum going and create extraordinary.

We undertook several capital projects including much-needed improvements to the Martin Luther King Jr. Memorial, modernization of our elevators, upgrading the infrastructure around the Carousel, and are in the process of completing the upgrades to the thirty-year-old playground, the ice arena roof, and the lights around the Great Lawn. We value safety, security, and access to our grounds, and these projects play an integral role in the implementation of these tenets. Toward activating campus amenities, the Conservancy is embarking on heightened programming through opportunities to bring to life marginalized voices in the community and beyond through film premieres, festivals, dying art forms such as Cantonese Opera, and programs and displays that unite the community that are self-directed, inclusive, and welcoming.

We continue to explore new ventures and partnerships and will host several of the events tied to San Francisco hosting the annual American Public Gardens (APGA) Conference in June 2026. We will also host the Urban and Community Forestry Society (UCFS) in January 2026. These events are an opportunity for us to highlight the Gardens and the meaningful programming we have started to not only grow interest, but to

create a sustained traffic flow for years to come. These activations will generate much in revenues for the area restaurants, museums, and related businesses as they too jump on the partnership bandwagon.

In July 2026 we will host our first Reggae Festival at the Gardens, commemorating the final week of the World Cup. With the Bay Area playing host to six World Cup games attracting over 200,000 visitors from afar in the summer of 2026, what better way than to leverage the rhythms and vibe of reggae music to say hello.

We continue to face the challenges of thirty-year-old infrastructure, while doing our part through the available capital dollars to safeguard the city-owned site continually. All of this would not be possible without the dedication of the twelve full-time staff, and the over thirty contracted staff who work hard each day to engage, deliver, innovate, and learn. A big thank you to them in making the Gardens what it is today.

If you are new to San Francisco or a resident and have not visited the downtown area, visit us and see for yourself the ways we are building community. Join us for the free Walks that talk about the history of the site, the challenges, the offerings, and share the creation of the over twenty respective gardens, signage, murals, messaging kiosk, and brochures that make it easier to navigate our Gardens campus.

Hope to run into you while you traverse our Gardens to relax, rejuvenate, reflect, and reinvigorate from the stresses of life by getting a dose of vitamin N (nature) at Yerba Buena Gardens.

With deep appreciation,

Subhajeet Ghose
Executive Director



LEADERSHIP

Board of Directors

Ken Bukowski, Chair

Director, Convention Facilities
City & County of San Francisco

Lawrence Li, Operations & Marketing Committee Chair

Senior Operations Advisor, SPUR

Victor Vazquez, Finance Committee Chair

Senior Vice President
Community & Social Responsibility Manager
Bank of San Francisco

Kate Faust, Capital Committee Chair

Capital Planning Manager
Office of Resilience & Capital Planning,
City & County of San Francisco

Gayle Romasanta, Audit Committee Chair

Executive Director
Filipino-American Development Foundation

Scott Rowitz, Nominating Committee Chair

Executive Director
Yerba Buena Partnership

Sally Oerth

Director of Real Estate, City & County of San Francisco

Kristen Jacobson

Director
Grants for the Arts, City & County of San Francisco

Sarah Dennis Phillips

Executive Director
Planning Department, City & County of San Francisco

Linda Lucero

Executive/Artistic Director
YBAE Yerba Buena Gardens Festival

Jorge Rivas

Executive Director
Office of Civic Engagement & Immigration Affairs,
City & County of San Francisco

Raquel Redondiez

Director
SOMA Pilipinas

John Elberling

President
TODCO

Prodan Statev

Sales Engineering
Resolve AI

Management

Andrew Gillespie

Chief Engineer

Angelo Ferreras

Capital Program Manager

Bunny McFadden

Administrative Services Manager

Devon Katzner

Special Projects Manager

Marie Aubry

Finance Manager

Matthew Chu

Services Manager

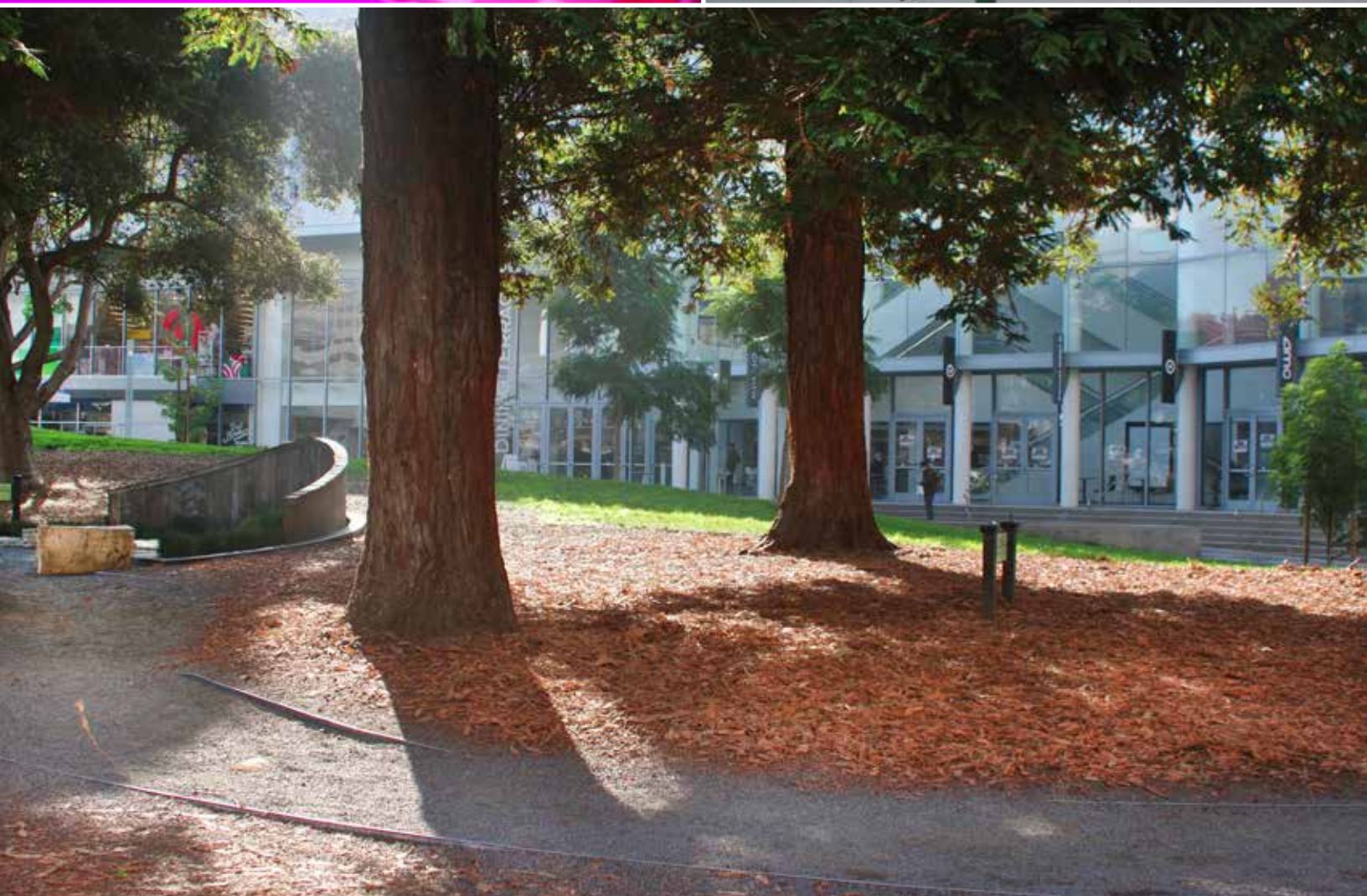
Tony Pellegrini

Operations Manager

CAPITAL PROJECTS COMPLETED

- 1 Boilers at Yerba Buena Center for the Arts & Ice Arena
- 2 Dehumidification units at Ice Arena
- 3 HVAC at Child Development Center & Creativity Museum
- 4 Roof at Creativity Museum
- 5 Elevators at the Gardens
- 6 Theatre Stage replacement at Creativity Museum
- 7 Sealing work at MLK Jr. Memorial & Terrace
- 8 Roof on historic Carousel
- 9 Main entry doors on campus
- 10 Path upgrade to Great Lawn
- 11 Playground upgrade
- 12 Signage upgrade
- 13 Securing the MLK Jr. Memorial & Yerba Buena Lane





STATEMENT

Financial Position

June 30, 2025 & 2024

ASSETS

	2025	2024
Cash & Cash Equivalents	\$ 2,861,481	\$ 3,278,154
Certificate of Deposit	4,302,507	4,500,119
Rent Receivables, Net	2,826,543	2,974,412
Due from City of San Francisco	312,595	321,009
Grant Receivable	–	1,258,118
Prepaid Expenses	358,274	30,970
Capital Assets, Net	319,599	149,855
Contributed Right-of-use Asset	129,745,585	133,333,020
Total Assets	\$ 140,726,584	\$ 145,845,657

LIABILITIES & NET ASSETS

Account Payable	\$ 391,823	\$ 672,106
Accrued Expenses	417,378	347,441
Deferred Revenue	4,441	11,521
Total Liabilities	813,642	1,031,068
Without Donor Restrictions	10,167,357	10,223,451
With Donor Restrictions	129,745,585	134,591,138
Total Net Assets	139,912,942	144,814,589
Total Liabilities & Net Assets	\$ 140,726,584	\$ 145,845,657

STATEMENT

Activities & Changes in Net

Ended June 30, 2025

SUPPORT & REVENUE

	Without Donor	With Donor	Total
Rental Income	\$ 8,871,612	\$ -	\$ 8,871,612
Event Revenue	847,341	-	847,341
Contributions	9,117	35,000	44,117
Investment Income	160,410	-	160,410
Other Income	136,599	-	136,599
Net Assets Released from Restriction	4,880,553	(4,845,553)	-
Total Support & Revenue	\$ 14,905,623	\$ (4,845,553)	\$ 10,060,079

EXPENSES

Program Services	\$ 14,051,333	\$ -	\$ 14,051,333
General & Administrative	910,393	-	910,393
Total Expenses	14,961,726	-	14,961,726
Change in Net Assets	(56,094)	(4,845,553)	(4,901,647)
Net Assets (Beginning of Year)	10,223,451	134,591,138	144,814,589
Net Assets (End of Year)	\$ 10,167,357	\$ 129,745,585	\$ 139,912,942

UPCOMING CAPITAL PROJECTS

- 1 Elevator Modernization
- 2 Great Lawn Lighting
- 3 Roof Replacements
- 4 Japanese Garden
- 5 Chinese Medicinal Garden
- 6 Crepe Myrtle Garden Fountain Upgrade
- 7 New Trees
- 8 HVAC Upgrades
- 9 MLK Jr. Memorial Upgrade





UPCOMING EVENTS IN 2026

Cantonese Opera

Saturday, March 22

Creativity Museum Theatre (fee applies)

Easter Egg Hunt (with EPIC Church)

Saturday, March 28

Great Lawn (registration suggested)

Scholastic Chess Championship

Saturday, 11 April

YBCA Forum Theatre (registration required)

3rd Annual Earth Day Festival

Saturday, April 18

Great Lawn

Climate Action Youth Summit

Friday, April 24

Great Lawn & Upper Terrace

Wishing Handkerchief

December 6, 2025 – June 30

Carousel (fee applies)

CREOS Art Display

May 13 – June 19

Garden Walks

One Wednesday & One Saturday per month

Monthly through May (registration suggested)

Teen Chess Tournament

Summer

Outdoor Chess Tables (fee applies)

Speaker Series

July – December (once a month)

Creativity Museum Theatre (fee applies)

Reggae Festival with Pato Banton

Saturday, July 18

Great Lawn

Paper Aeroplanes Competition

Saturday, August 8

Amphitheatre & Upper Terrace (registration required)

Pumpkin Giveaway & Carving Contest

Saturday, October 24

Carousel Plaza (donation suggested)

2nd Annual Plant Sale

Saturday, October 24

Carousel

Diwali Celebration

Sunday, November 8

3rd Annual Carousel & Tree Lighting

Saturday, December 5

Carousel

CAMPUS PARTNERS

YERBA BUENA
GARDENS
FESTIVAL

Yerba Buena Gardens Festival

Music, Theater, Dance, Cultural Events

760 Howard Street, San Francisco, CA 94103
415.543.1718

ybgfestival.org



Yerba Buena Ice Skating & Bowling Center

Figure Skating, Hockey, Bowling

750 Folsom Street, San Francisco, CA 94103
Skating: 415.820.3521 | Bowling: 415.820.3541

skatebowl.com

SOMACC
SOUTH OF MARKET CHILD CARE

South of Market Child Care (SOMACC)

790 Folsom Street, San Francisco, CA 94103
415.820.3500

somacc.org

CHILDREN'S
CREATIVITY
MUSEUM

Creativity Museum

Programs & Campus for youth to age 12 / Memberships

221 4th Street, San Francisco, CA 94103
415.820.3320

creativity.org



Yerba Buena Center for the Arts

Galleries, Theaters, Programs, Curations

701 Mission Street, San Francisco, CA 94103
415.978.2700

ybca.org



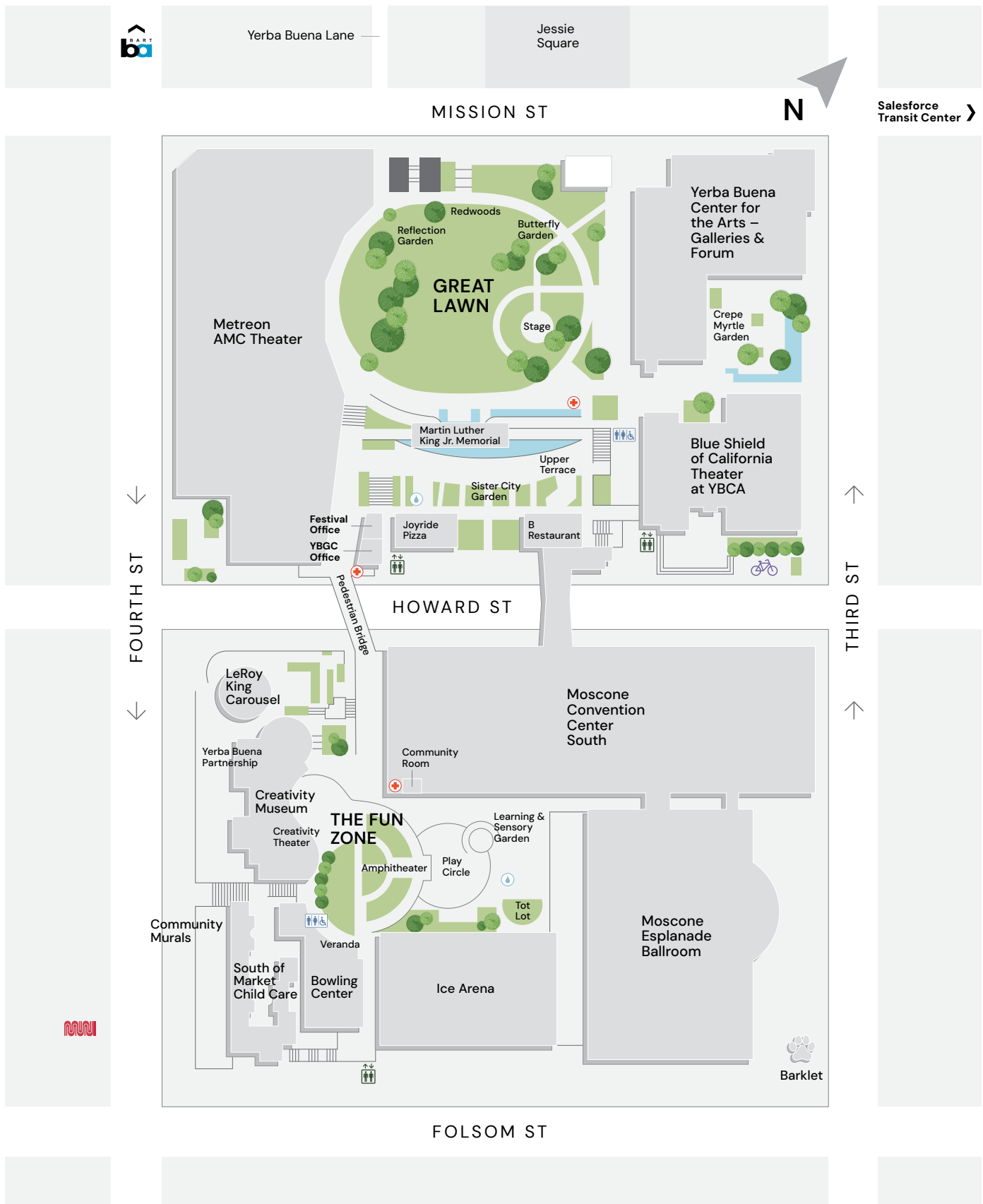
Yerba Buena Partnership

Community Benefit District

750 Howard Street, San Francisco, CA 94103
415.919.4049

ybcbd.org

YERBA BUENA GARDENS MAP





WHO WE ARE BY THE NUMBERS

20

SPECIFIC
GARDENS



3M+ ANNUAL
VISITORS

1.6 MILES OF
WALKWAY

1

BOWLING
CENTER

ICE ARENA



87 TOTAL
ACRES

6 DRINKING
FOUNTAINS

2



PLAYGROUNDS

5 ACRES OF
GREEN SPACE

2 PUBLIC RESTROOMS
DOG STATIONS

32 SPECIES

260

TREES



4

INDOOR/
OUTDOOR
THEATERS

95 PLANT
VARIETIES

1

CREATIVITY
MUSEUM

14

PUBLIC
ART



10 MURALS
ON DISPLAY

6 BIKE PARKING
AREAS

1



CAROUSEL

To learn more, visit YerbaBuenaGardens.org



Climate Action Youth Summit



4th Street Murals



4th Street Murals



Crepe Myrtle Garden Concert



Plant Sale



Alebrijes & Nahuales at Yerba Buena Gardens



verbabuenagardens.org

WELCOME
MALAYSIAN
PACIFIC
BIENVENIDO
SILANG
歡迎光臨