

**YBGF Shade Project
and progress**

The challenge:

- Current stage was not built with weather or climate change in mind
- Performers, equipment, and audience members frequently overheat (SF Symphony, Ballet, for example, are reluctant to return to YBG)
- Most events take place during summer months, **150+ programs with 150k+ attendees** annually
- Pop-up canopies only provide partial coverage and are not an aesthetic solution
- Seniors and children are at highest risk for overheating and natural shade is limited
- Structural limitations restrict design possibilities
- Solutions must take rentals and gardens use into account
- **This shade is one of many needed capital improvements** for the facilities for rentals and public events



Progress:

2023

- July - **\$50k SFAC Planning Grant**
- Aug-Nov - Meetings with Designers
- Dec - Additional Engineering Info needed

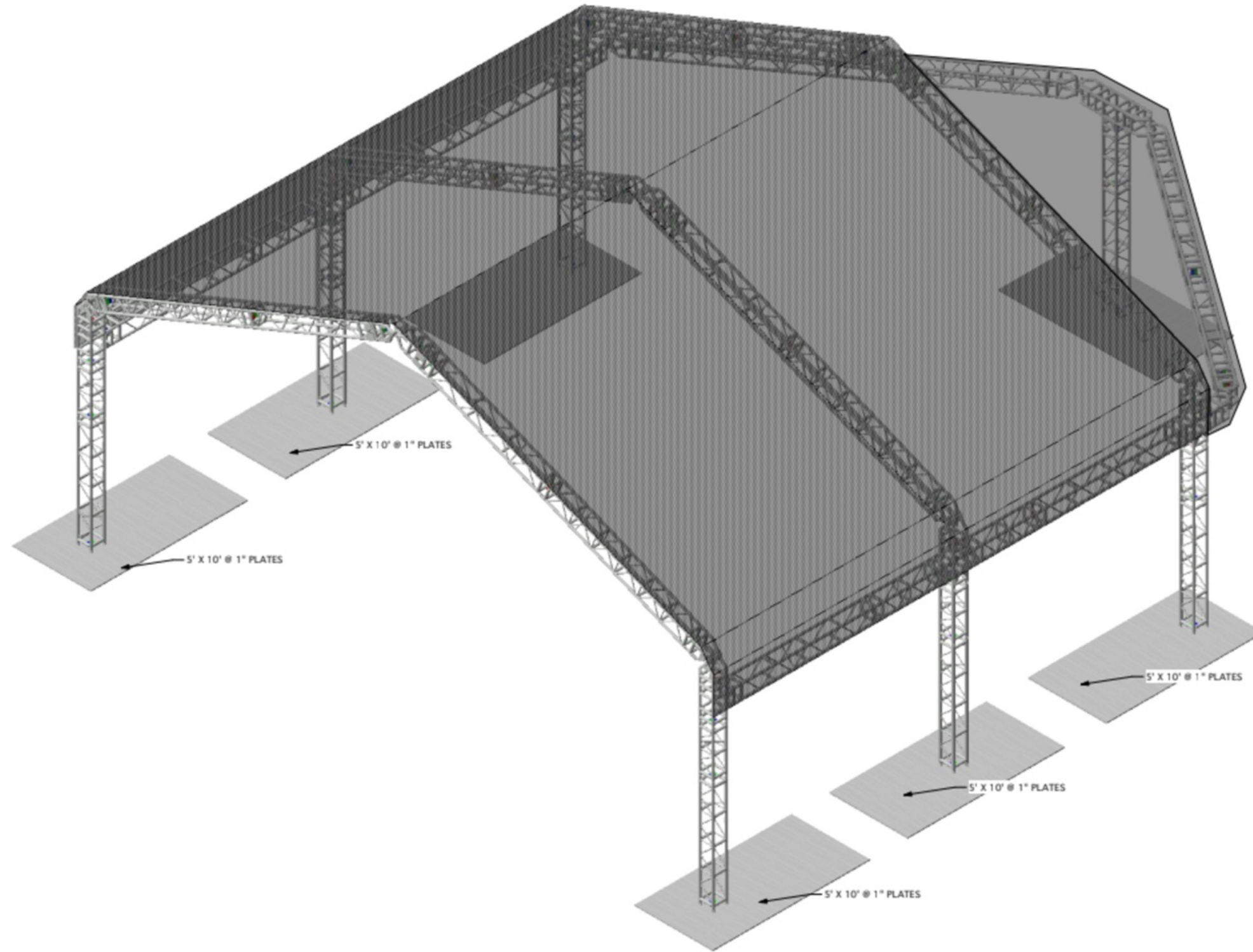
2024

- Jan-April - Acquiring site plans from DBI
- May - Meetings with Weldon Exhibits
- June - 1 yr extension from SFAC
- July - Concepts received from Weldon
- August - 3 “grand concepts” shared with Seve and Conservancy ops team for feedback
- November - Final design and pricing received from Weldon
- December - Final design shared with ops team

2025 Next steps:

- Get stakeholder input and feedback for grand approach
- Short term design solution
- Capital budget
- Fundraising ideas

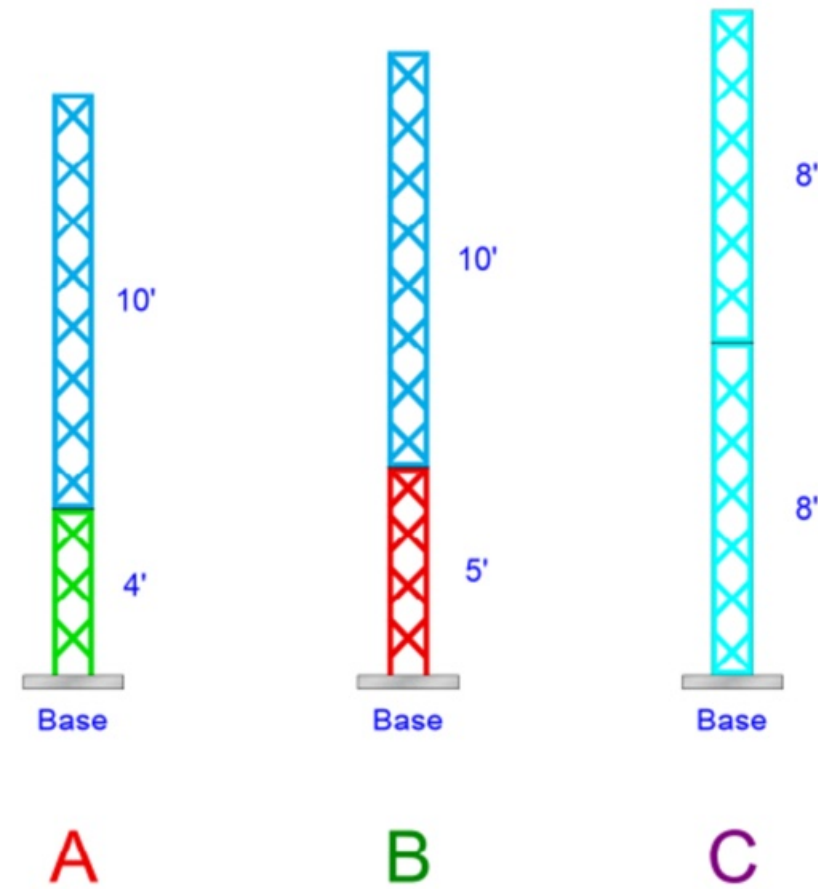
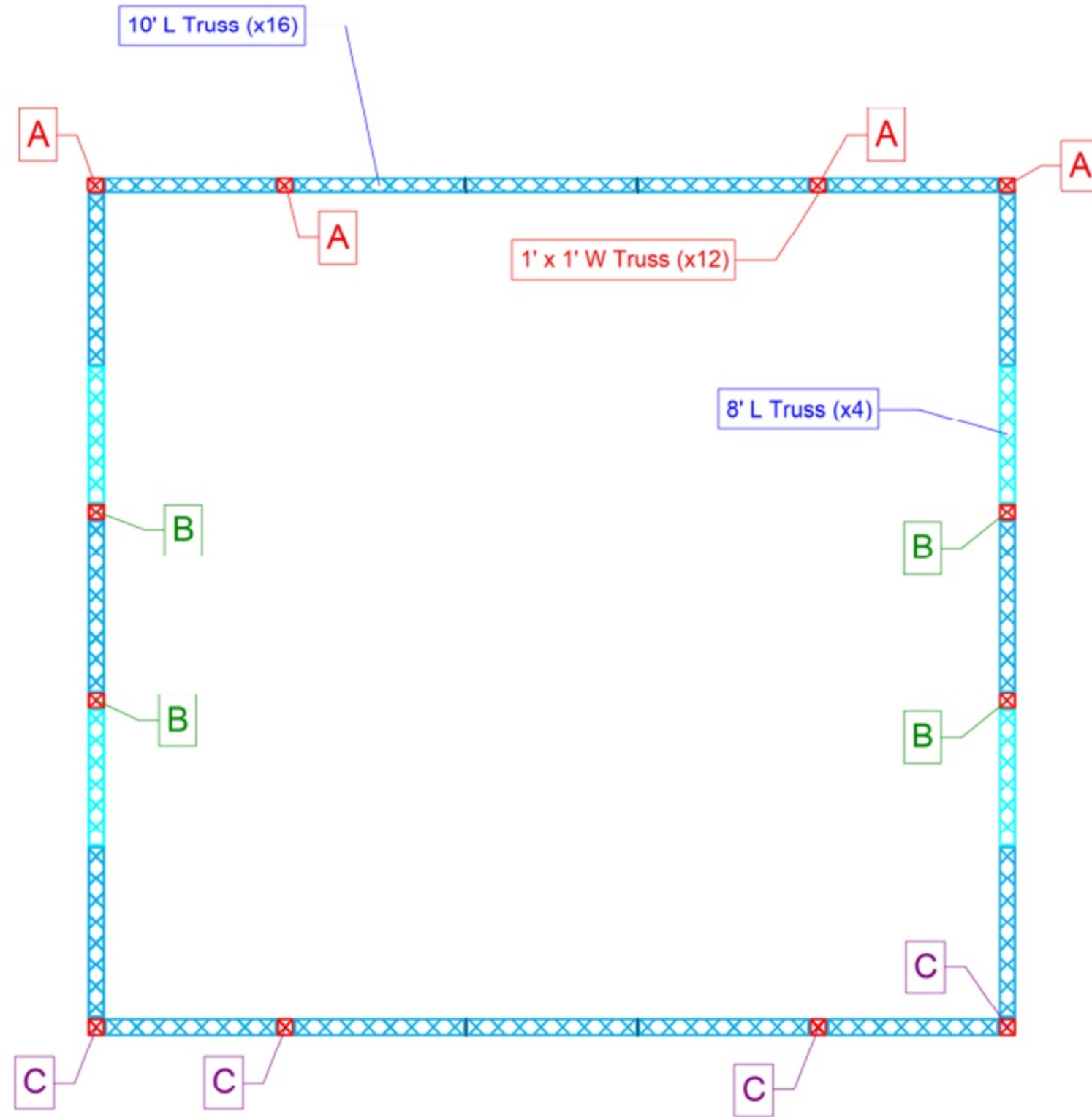
BD+20



ISOMETRIC VIEW

	YERBA BUENA GARDENS ROOF STRUCTURE	 BROWN UNITED ph. (800) 44-BROWN fax. (800) 26-BROWN international 626-357-1161 info@brownunited.com	DRAWN BY APPROVED BY SCALE DATE REVISION JOB NO. SHEET NO. 1 SHEET 1-5
USE THIS SCALE FOR DIMENSIONS, ALL DIMENSIONS ARE IN FEET AND INCHES. INCREASES 0.05 DEGREES DECREASES +/- 1/32 IN THE SCALE DIMENSIONS REMOVE BURR & SHARP CORNERS. CLEAN UP ALL DIMENSIONS BEFORE STARTING THE CONSTRUCTION.	THIS DRAWING IS THE PROPERTY OF BROWN UNITED INTERNATIONAL. IT IS TO BE USED FOR THE PROJECT AND NOT FOR OTHER PURPOSES WITHOUT THE PERMISSION FROM BROWN UNITED, INC. USE OF THIS DRAWING FOR ANY OTHER PROJECT IS STRICTLY PROHIBITED. THE DRAWING FOR LADING IS STRICTLY PROHIBITED. THE DRAWING IS TO BE USED WITH CONDITIONS BEFORE STARTING THE CONSTRUCTION.		

Bright



22674 Broadway, Suite A
 Sonoma, CA 95476
 707 940-6000
 www.BrightRentals.com

This diagram is copyrighted, confidential & proprietary information & the property of Bright Event Rentals. It is provided to clients, prospective clients, & related parties for the purposes of planning & executing special event rentals. Any use or reproduction of this diagram by unauthorized parties is strictly prohibited.

Order#:
 _Lower#
 Date:
 Delivery:

Truss Layout

Drafted By: AS

Version: 1 Scale:

Metamorphic Creations

Grand Park, LA



Weldon Exhibits: Recommended by YBGC design firm that worked with CCM on CB3 shade structure

YBGF Esplanade Stone Stage Improvements – Conceptual Design Team:



Weldon Exhibits [WE] Team:

Dean Weldon, Creative Director, Founder Weldon Exhibits LLC.:

Over 40 yrs experience developing museum projects nationally and internationally providing creative design and the highest quality exhibit fabrication services. WE Team includes experience designers, interactive designers, graphic designers, illustrators, writers, content developers, exhibit fabricators, project managers and project estimators.

Bonnie Miguel of Miguel Creative provides graphic design services for WE Team projects. WE Team (listed below) recently completed Phase Two for the SF Children's Creativity Museum.

Shad Beazer, Studio Twenty-Two Architects:

Shad Beazer and Cyrus Amani-Taleshi together have over 40 years of experience in commercial architectural design. Studio Twenty-Two provides excellent architectural design, combined with hands-on management to ensure client satisfaction. We take an environmentally conscious approach to our design, working closely with our Green Building consultants, utilizing state of the art software to evaluate and document our designs energy performance.

Kelly Weldon, Principal, Nabih Youssef & Associates has been involved with a wide variety of engineering projects, including housing developments, educational facilities, hospitality and commercial developments and recently the Children's Creativity Museum. Kelly is a certified SAP Evaluator, which allows him to confirm if a building is safe or not following a disaster. Kelly has been with NYA for over 14 years.

Tony Campagna, Partner, CB2 General Contractors:

Tony provides SE Consultant Construction & Cost Estimation: At CB2 Builders we are passionate about the work we do and the teams we serve. We solve problems with creative solutions and the work hard with a "no compromise" attitude to provide great service to our clients. Lori Campagna is the CEO/CFO since 2007, has worked in the commercial construction industry for over 25 years. She takes a hands-on approach to many roles within the company. As a woman-owned business enterprise, CB2 has had the opportunity to provide additional contract opportunities and participate in supplier diversity programs.



Inspiration:

- The Yerba Buena Gardens premier location merits a new grand Esplanade Stage solution equivalent to other worldclass cities: the Millennium Park in Chicago, Central Park in NYC. Our challenge is to create a pleasant yet dynamic, memorable shaded environment for audience and performers for The Yerba Buena Gardens Festival while encouraging year around use, including evening events.



Inspiration:

A Grand Approach: SF is one of the great cities of the world and the Yerba Buena Gardens Esplanade is a premier location. A new grand approach would help in SF downtown revitalization, while serving the community and tens of millions of tourists annually.



Considerations:



The center lawn area is actively used for set-ups, temporary seating, Moscone events, etc. The center lawn area must remain accessible and open.



The goal of WE Team report is to present something grand, inspiring, feasible while maximizing the use of the property – being used to its fullest with new facilities that could accommodate evening events.



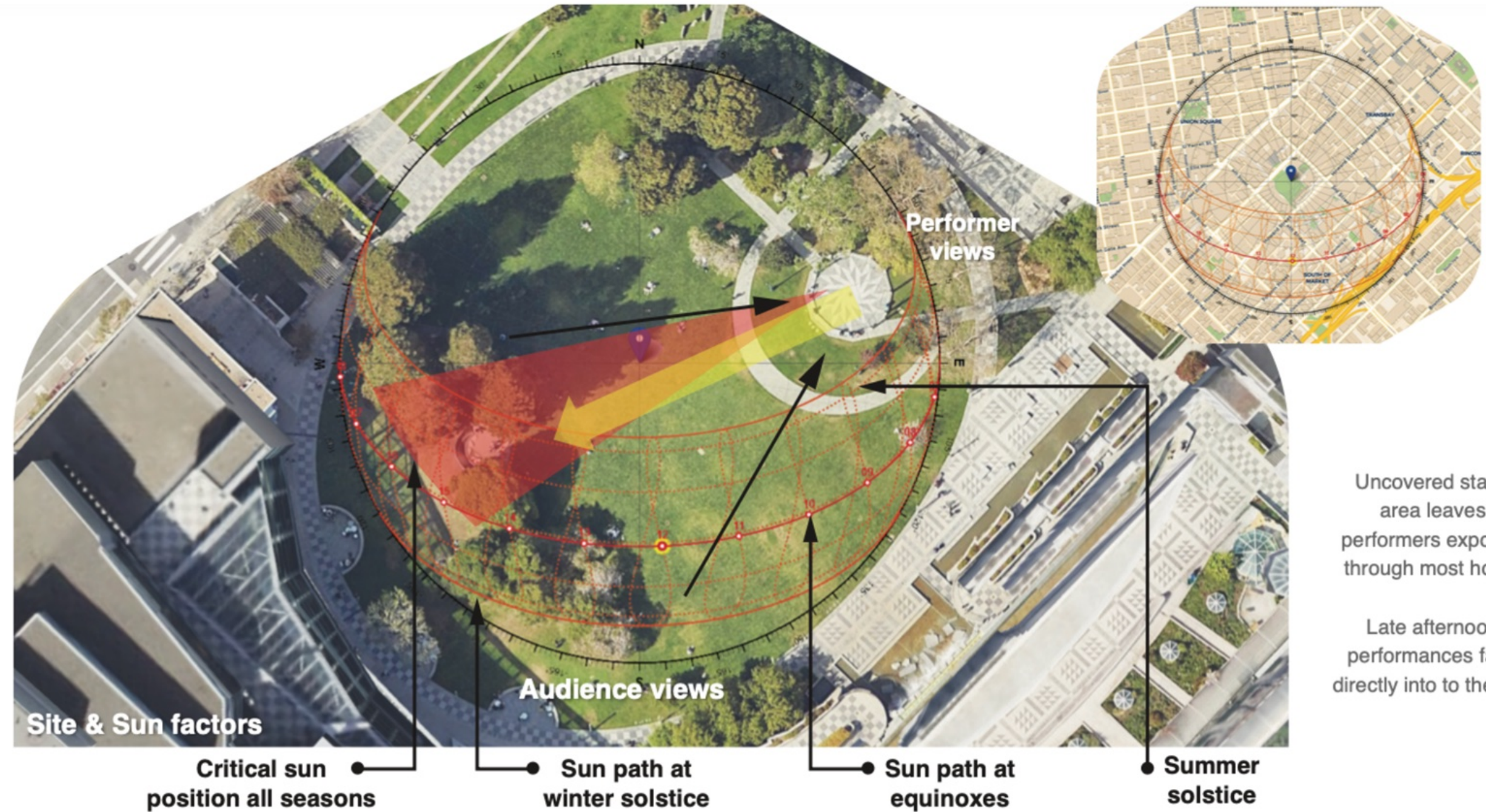
The new stage is to be 32' wide x 40' deep x 2.5' AFF – that is big enough.



YBGF would like the big idea to not be too imposing. YBGF ethos is the appearance of “no barrier between artist and audience.” When there is not a performance, the area is for public use.



The new stage and shade system if grand enough, becomes an opportunity for significant donor naming/funding.



Weldon Exhibits: grand approach

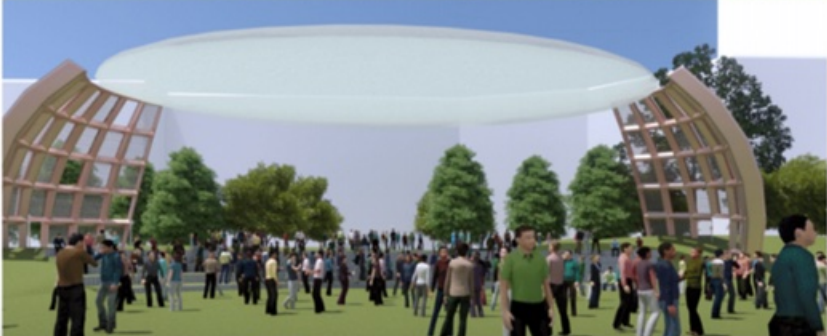
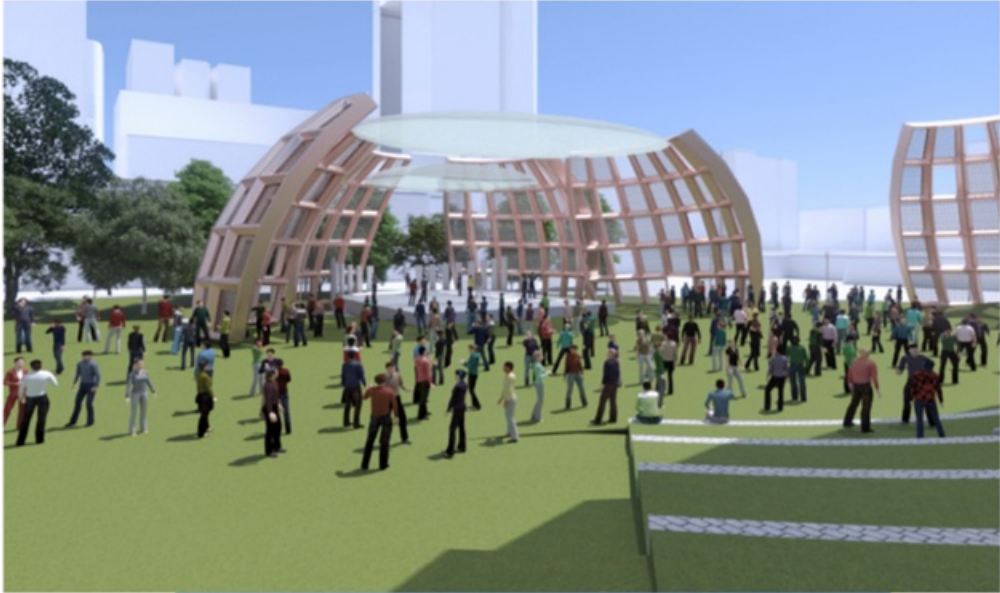
Conceptual Approach:
Esplanade Stone Stage Improvements

Clover Forms



Conceptual Approach:
Esplanade Stone Stage Improvements

Billowy Lattice Structures
Site Plan + renderings



Conceptual Approach:
Esplanade Stone Stage Improvements

Parade of Petals
Site Plan and Renderings





**Clover Forms
Influences...**

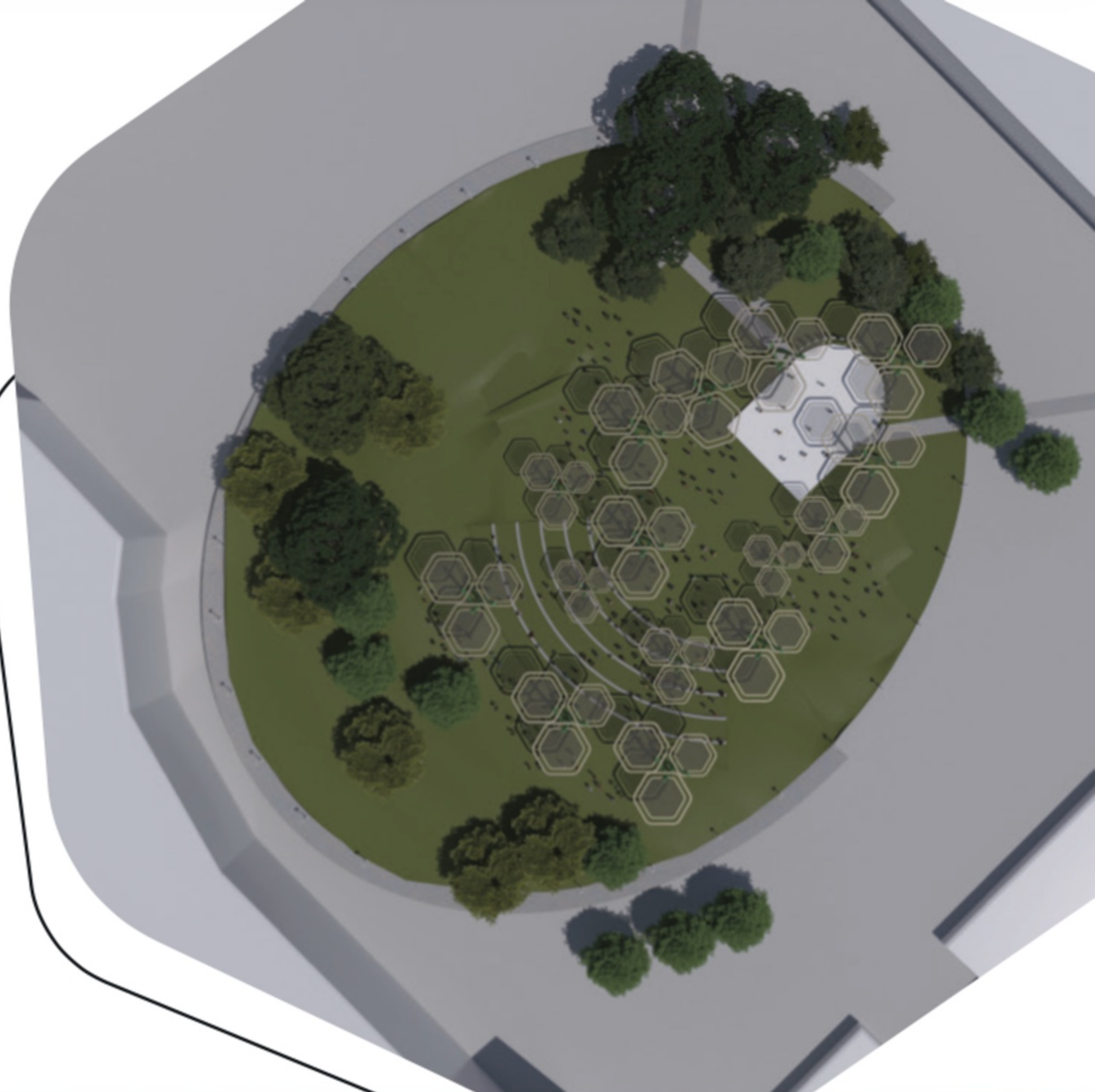
Enlarged Natural Forms...

Shade for
stage performers,
shade for audience





Clover Forms
Site Plan and Renderings





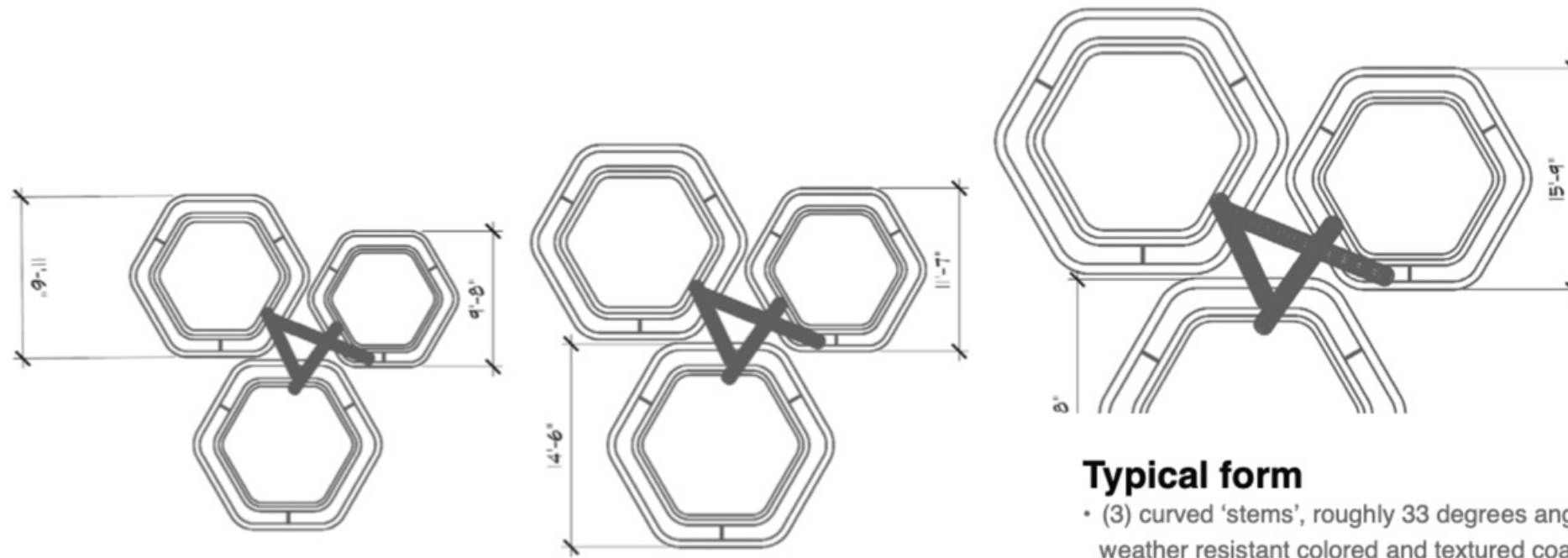
Clover Forms
Renderings



Clover Forms

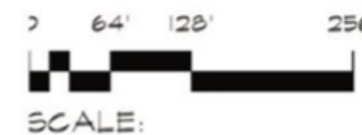
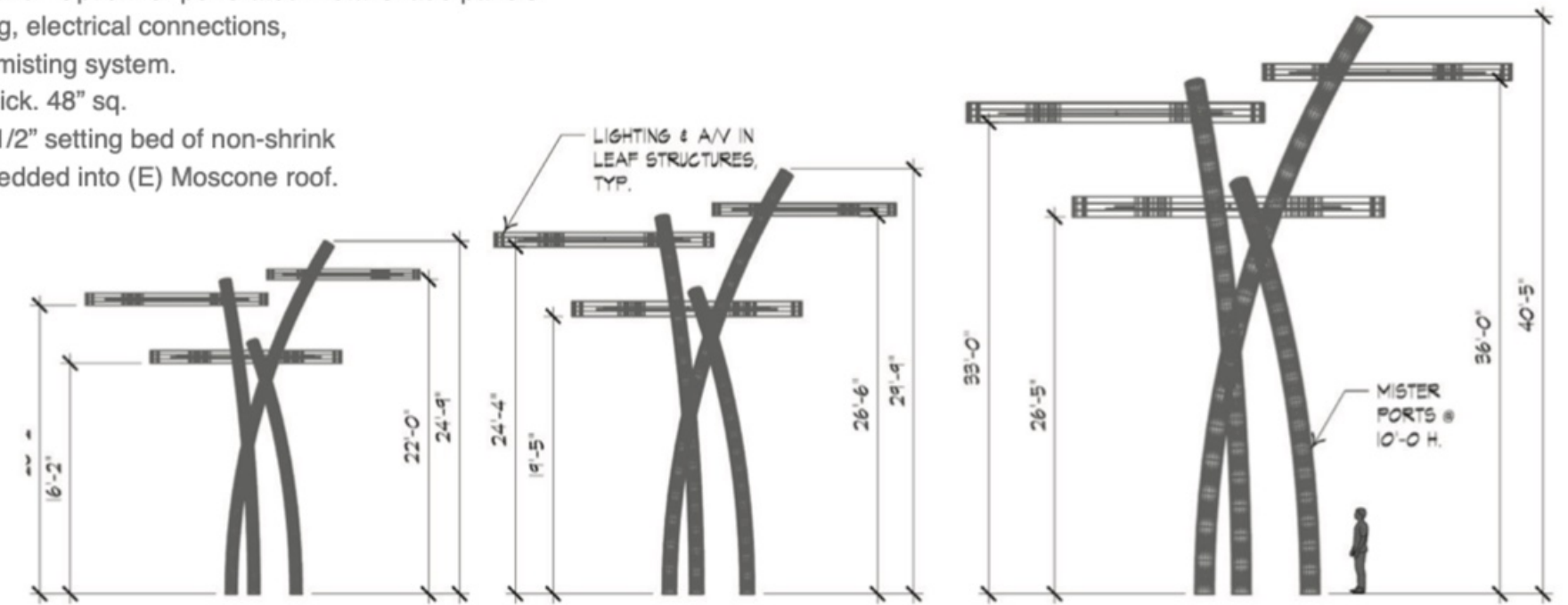
Scope of Work Statement:

- 16 total structures
- 10 large – 40' tall, (2) 19' hex 'leaf' hoops, (1) 16' hex 'leaf' hoops
- 3 medium - 29' tall, (2) 14' hex 'leaf' hoops, (1) 12' hex 'leaf' hoops
- 3 small 24' tall, (2) 12' hex 'leaf' hoops, (1) 9' hex 'leaf' hoops



Typical form

- (3) curved 'stems', roughly 33 degrees angle of bend, 12" diameter steel pipe, weather resistant colored and textured coating
- 'Leaf' hoops – 4"x12" aluminum tube outer hoop, 2"x6" aluminum tube inner hoop connected to outer hoop at 2 points to allow limited pivot movement. Stretched shade fabric fixed inside inner hoop. Possible metal, composite, or marine plywood kinetic shapes on stainless steel suspension wire in lieu of shade fabric. Option for perforated metal shade panels.
- 'Stems' to have provision for lighting, electrical connections, A/V connections, and plumbed for misting system.
- Each 'stem' group to have 1-1/4" thick, 48" sq. A36 galv. Steel. base plate over 1-1/2" setting bed of non-shrink grout w/ 3/4" 6" threaded rods embedded into (E) Moscone roof.



CLOVER SHADE STRUCTURE ELEVATIONS

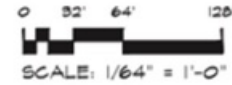
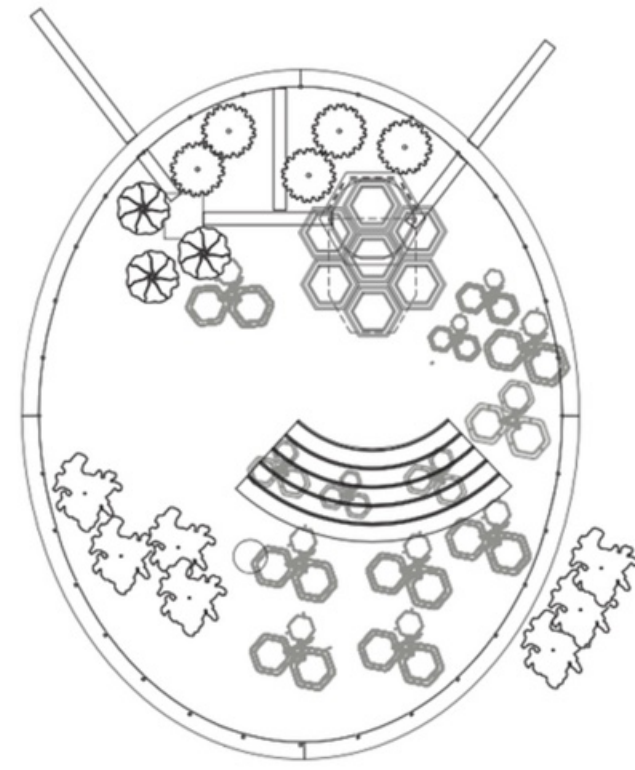
**YERBA BUENA GARDENS FESTIVAL
ESPLANADE STONE STAGE &
SHADE STRUCTURES**

Option 1:

- Enlarged Stone Stage
- (16) Shade Structures
- Curved seating in lawn area

Site Work:

- Area of site work, approximately 64,000 sf. Excavate topsoil & geofoam 3'-6' deep, remove and replace (e) Moscone roofing membrane, (N) membrane system per YBGC consultant spec. Provide (N) geofoam, topsoil & regrade site. Provide new amphitheater stepped seating area with 5 steps & concrete retaining walls, each step 18" h. from each level below.
- Provide new lawn & landscaping, design TBD
- Provide new stage, approximately 1,200 sf. With provisions for temporary stage of approximately 1,200 sf. a/v & lighting system & stage shade structure, design TBD



SITE PLAN OPEN CENTRAL AREA

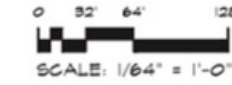
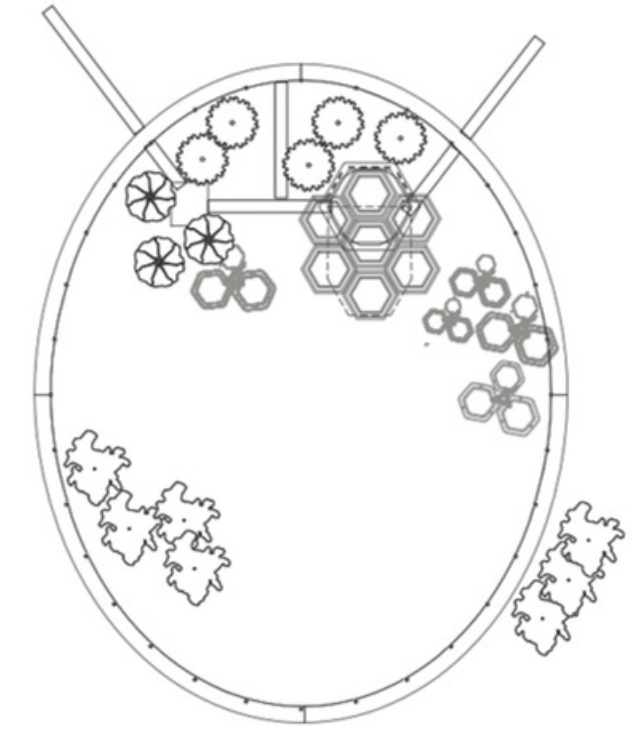
**YERBA BUENA GARDENS FESTIVAL
ESPLANADE STONE STAGE &
SHADE STRUCTURES**

Option 2:

- Enlarged Stone Stage
- (10) Shade Structures
- No Curved seating in lawn area

Site Work:

- Area of site work, approximately 32,000 sf. Excavate topsoil & geofoam 3'-6' deep, remove and replace (e) Moscone roofing membrane, (N) membrane system per YBGC consultant spec. Provide (N) geofoam, topsoil & regrade site. Provide new lawn & landscaping, design TBD
- Provide new stage, approximately 1,200 sf. with provisions for temporary stage of approximately 1,200 sf. a/v & lighting system & stage shade structure, design TBD



SITE PLAN OPEN CENTRAL AREA

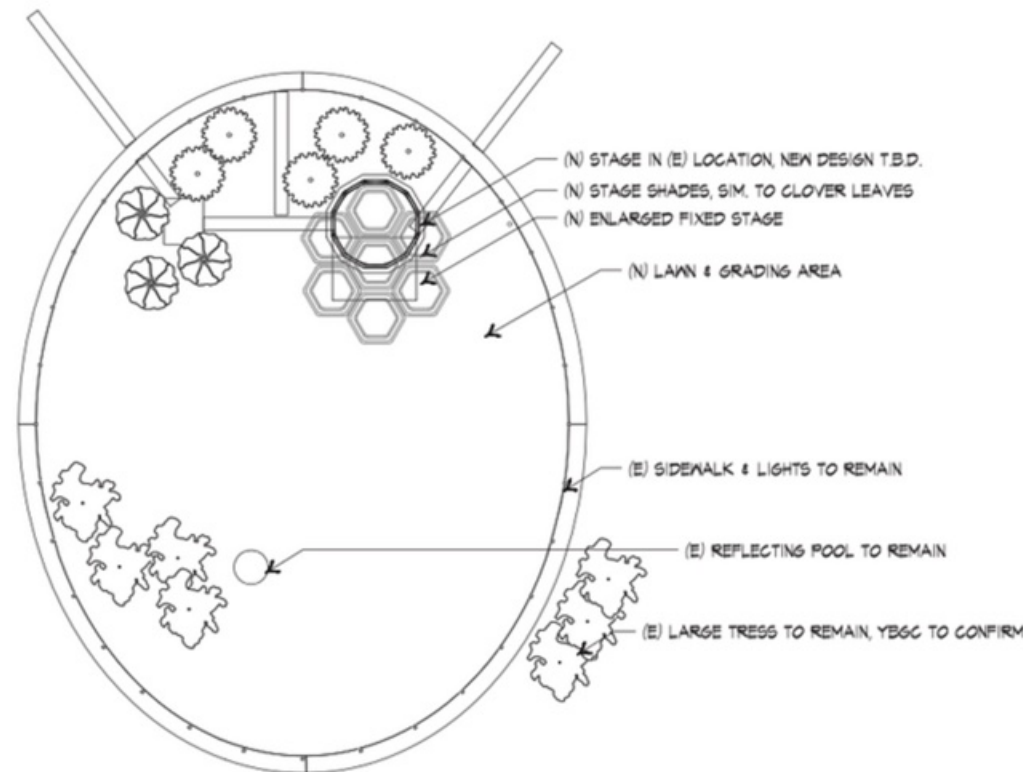
**YERBA BUENA GARDENS FESTIVAL
ESPLANADE STONE STAGE &
SHADE STRUCTURES**

Option 3:

- Enlarged Stone Stage
- (3) Shade Structures
- No Curved seating in lawn area

Site Work:

- Area of site work, approximately 4,000 sf. Excavate topsoil & geofoam 3'-6' deep, remove and replace (e) Moscone roofing membrane, (N) membrane system per YBGC consultant spec. Provide (N) geofoam, topsoil & regrade site. Provide new lawn & landscaping, design TBD
- Provide new stage, approximately 1,200 sf. with provisions for temporary stage of approximately 1,200 sf. a/v & lighting system & stage shade structure, design TBD



Option 1, full coverage: \$7.5m
Option 2, partial coverage: \$4.98m
Option 3, stage only: \$1.75m

November 6th, 2024 Dw

Yerba Buena Gardens Festival Shade & Stage Structures

Preliminary Estimate: Option 1

Note: No Bonds Are Included

DESIGN FEES:

Architecural Design	\$750,000.00
3d Design, Prototyping	\$750,000.00
Engineering	\$50,000.00
Landscape Design	\$100,000.00
Electrical Design	\$50,000.00
Preconstruction Des & Repricing	\$35,000.00

SUBTOTAL: \$1,735,000.00

FABRICATION, CONSTRUCTION & INSTALLATION:

Off Site Fabrication
Onsite Soil Removal
Roof Membrane
Foundtations
New Stone Stage With Stone Finish
Lighting, Electrical, Sound Systems
Installation
Permits

SUBTOTAL: \$5,426,790.00

Overall Project Management 6%

SUBTOTAL: \$350,000

TOTAL COST: \$7,511,790.00

Next steps:

- Get stakeholder input and feedback for grand approach
- Short term design solution
- Inclusion in Capital budget
- Fundraising ideas

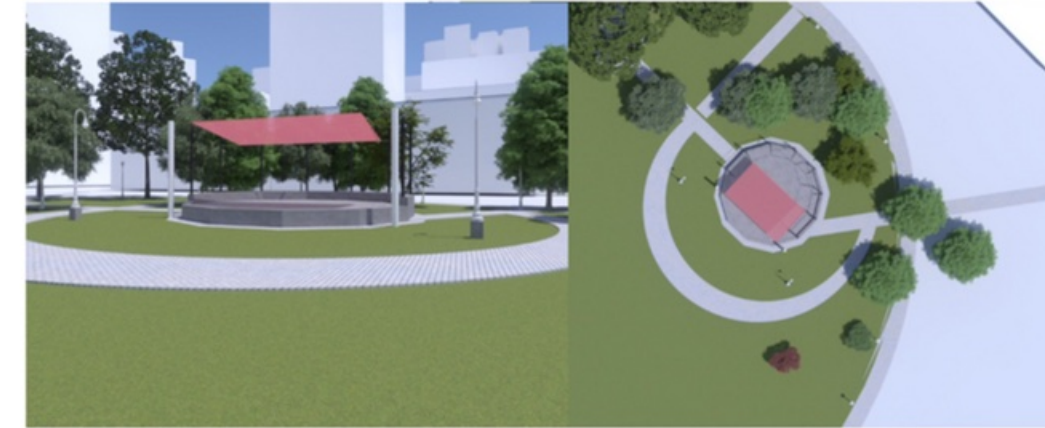
Thank you!

Conceptual Approach:

Esplanade Stone Stage Improvements

1) Something Simple:

- Fabric Awning: reinforced cabling
- Two new steel masts w/Tensile Fabric structure



Plan View two steel masts w tensile fabric structures - shade study image



shutterstock

Look & Feel Images

